

HEIM *Unibal*[®]

SPHERICAL BEARINGS

two piece construction

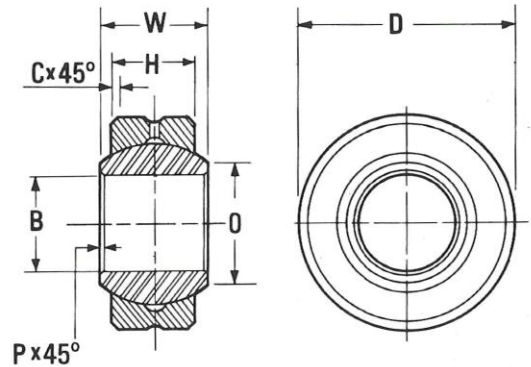


SPECIFICATION

HOUSING STAINLESS STEEL TO SPECIFICATION S80/EN57.

BALL STAINLESS STEEL.
THROUGH HARDENED TO ROCKWELL 'C' 50/54.

ALL DIMENSIONS GIVEN IN INCHES.



RST series

BEARING NUMBER	B	D	W	H	O	C	P	Ball Diameter	Maximum Static Radial Load in Pounds Approx.	Weight in Pounds Approx.
	Bore	Outside Diameter	Ball Width	Housing Width	Ball Flat Diameter	Chamfer	Chamfer			
	+·0000· -·0005	+·0000 -·0005	+·000 -·005	+·005 -·005		+·015 -·000	+·015 -·000			
RST 2	·1562	·4687	·250	·187	·235	·020	·010	$\frac{11}{32}$	4,500	·007
RST 3	·1875	·5625	·281	·218	·293	·020	·010	$\frac{13}{32}$	6,000	·015
RST 4	·2500	·6562	·343	·250	·364	·022	·016	$\frac{1}{2}$	8,750	·023
RST 5	·3125	·7500	·375	·281	·419	·032	·016	$\frac{9}{16}$	10,000	·031
RST 6	·3750	·8125	·406	·312	·475	·032	·016	$\frac{5}{8}$	13,500	·039
RST 7	·4375	·9062	·437	·343	·530	·032	·016	$\frac{11}{16}$	16,500	·047
RST 8	·5000	1·0000	·500	·390	·600	·032	·016	$\frac{25}{32}$	21,000	·070
RST 9	·5625	1·0937	·562	·437	·670	·032	·016	$\frac{7}{8}$	26,000	·094
RST 10	·6250	1·1875	·625	·500	·739	·032	·016	$\frac{31}{32}$	33,500	·117
RST 12	·7500	1·4375	·750	·593	·920	·044	·032	$1\frac{3}{16}$	49,000	·203
RST 14	·8750	1·5625	·875	·703	·980	·044	·032	$1\frac{5}{16}$	64,500	·273
RST 16	1·0000	1·7500	1·000	·797	1·118	·044	·032	$1\frac{1}{2}$	84,000	·382

Add "G" to part number for groove in I.D. of ball and interconnecting oil hole.

For further information refer to Technical index.